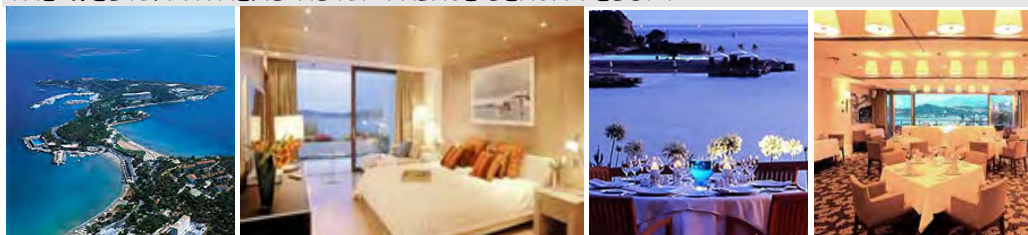


ON THE COAST...

THE WESTIN ATHENS ASTIR PALACE BEACH RESORT\*\*\*\*\*



**Location:** at the Athens Riviera, Vouliagmeni **Rooms:** Individually Controlled A/C, Electronic Key Locks, Satellite TV & Pay TV, Mini bar, Personal Safe box ( designed for laptops ), Voice mail messaging system, Hairdryer, Direct dial phone line- data port and Internet Access. **Facilities:** 7 Restaurants / 7 Bars, Private Beaches (3), Swimming Pools (3), VIP floors, Wine Cellar, Shopping Arcade, Helipad, Mini soccer, Hair & Beauty salon, Astir SPA, Kid's Club "Young Ambassadors", Indoor & Outdoor Parking space, Conference Centre: "cosmos" congress hall, 1 Ball Room, 4 Boardrooms, 12 Meeting Rooms, Outdoor Exhibition Area, 3 Private Beaches, Water sports, outdoor swimming pools, fitness centres, Tennis Courts, Mini soccer ASTIR SPA (under construction), 24-Hour Room Service, 24-Hour Concierge, Guest Relations desk, Shuttle Bus, Express Laundry, Personal shopper / driver (on request), Limousine Transfer, Baby Sitting, Foreign exchange, ATM in House, No smoking Rooms, Private Helicopter Services, Specially equipped rooms for Handicapped, In Room Dining, Private Parking, Butler Service (Excelsior Club), Technology Butler (Business Service).

Deluxe Rooms / Arion Resort & Spa

	BB	SINGLE	DOUBLE	TRIPLE
09 NOV 11 - 31 MAR 12		140.10	85,20	Upon request

Grand Deluxe Rooms / The Westin Athens

	BB	SINGLE	DOUBLE	TRIPLE
09 NOV 11 - 31 MAR 11		132.60	80.90	Upon request

BEST WESTERN FENIX/Glyfada\*\*\*\*

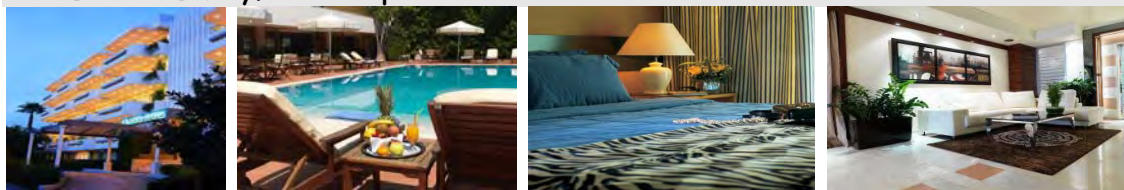


**Location:** 12 km from Athens and few minutes walk to the beach. **Rooms:** air condition, direct dial phone, TV, music and double glazed windows, balcony and fridge upon request. **Facilities:** restaurant, bar, pool bar, swimming pool, cocktail lounge and parking.

Standard room

	BB	SINGLE	DOUBLE	TRIPLE
01 NOV 11 - 31 MAR 12		57.00	31.50	24.70

**BLAZER SUITES/Glyfada\*\*\*\*superior**



**Location:** located in voula area of Athens coast

**Rooms:** Air-condition, Cable-/Satellite TV, Coffee-/Tea Machine, Daily maid service, Direct-dial phone, DVD Player, Fridge, Iron-/Ironing Board, Kitchen, Living room, Microwave, Minibar, Radio/Stereo System, Room service, Safe box, Wi-Fi Wireless Internet .

**Facilities:** Dry Cleaners Safe boxes Banquet Facilities Laundry Wireless Internet Swimming Pool Fully air conditioned Lounge Bar Poolside Snack Bar Congress area

BB	TYPICAL SUITE (2 PAX)	LARGE SUITE (2 PAX)	CORNER SUITE (2 PAX)
01 NOV 11 - 31 MAR 12	56.50	64.00	64.00

**CONGO PALACE/Glyfada\*\*\*\***

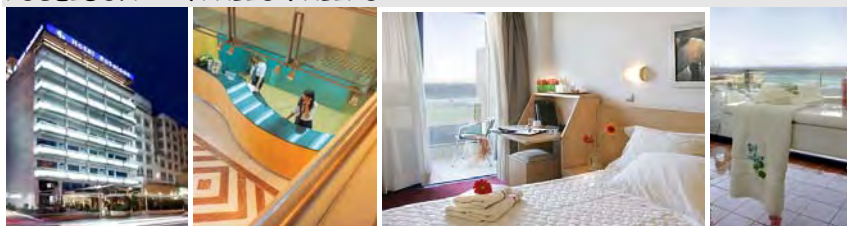


**Location :** located in the heart of the cosmopolitan seaside neighborhood of Glyfada, just 8 km from the center of Athens and 30 km from Athens international airport. **Rooms:** Individually controlled air conditioning, central heating, satellite television, electronic security locks, fridge, fully equipped bathroom, hair dryer, safe deposit box and spacious balconies.

**Facilities:** restaurant, bar, pool bar, swimming pool, internet access, web TV

BB	SINGLE	DOUBLE	TRIPLE
01 NOV 11 - 31 DEC 11	72.00	42.00	34.00
01 JAN 12 - 31 MAR 12	56.00	38.00	29.00

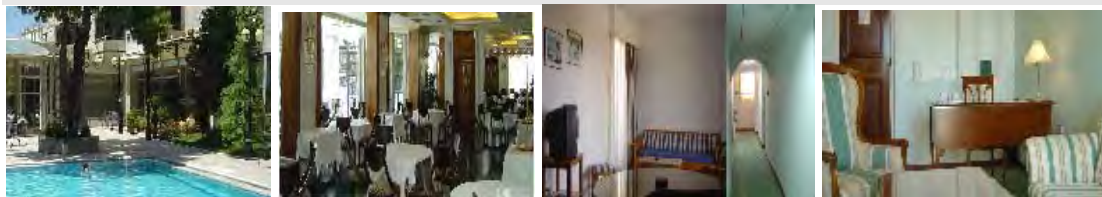
**POSEIDON\*\*\*\*/PALIO FALIRO**



**Location:** on Poseidon Avenue, the coastal Road between Athens and Sounio. **Rooms:** Air-condition, Direct-dial phone, Hairdryer, Mini-bar, TV. **Facilities:** reception, Banquet Facilities, Internet, Swimming Pool, Central heating, Fully air conditioned, Restaurants(On the Beach, Main Restaurant, Roof garden), Sea food tavern, Bar (Seaside, Poolside ), Congress area

BB	SINGLE	DOUBLE	TRIPLE
01 NOV 11 - 31 MAR 12	50.00	28.00	24.00

**OASIS/GLYFADA\*\*\*\***



**Location:** 12 km from Athens, few minutes drive to the airport and 200 m from the beach.  
**Rooms:** 34 Suites & 36 self-catering apartments, air condition, direct dial phone, balcony, TV.  
**Facilities:** reception, room service, bar, restaurant, TV lounge, swimming pool, jacuzzi, conference facilities, business centre, laundry service, parking.

	BB	SINGLE	DOUBLE	TRIPLE
01 NOV 11 - 31 MAR 12		61.00	36.00	28.70

**LONDON/GLYFADA\*\*\***



**Location:** 12 km from Athens, few minutes drive to the airport and 300 m from the beach.  
**Rooms:** air condition, direct dial phone, balcony, TV. **Facilities:** bar, restaurant, TV lounge, swimming pool.

**Superior room**

	BB	SINGLE	DOUBLE	TRIPLE
01 NOV 11- 29 FEB 12		44.00	24.00	19.00
01 MAR 12 - 31 MAR 12		54.00	29.00	22.40

**SEA VIEW/Glyfada\*\*\***



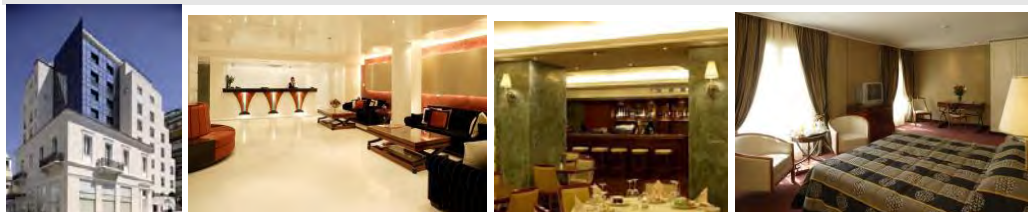
**Location:** 100m from the beach, 5 minutes walk to center of Glyfada resort. **Rooms:** air condition, direct dial phone, music, TV and balcony. **Facilities:** bar, restaurant and swimming pool, parking

**Executive room**

	BB	SINGLE	DOUBLE	TRIPLE
01 NOV 11 - 31 MAR 12		52.00	29.00	25.70

## AT PIRAEUS PORT...

### PIRAEUS THEOXENIA \*\*\*\*\*



**Location:** set on a prestigious block in the city centre, the business district of Piraeus and the biggest port of Greece. **Rooms:** air condition, internet connection, satellite TV, mini-bar, safe, direct dial phone, hairdryer. **Facilities:** 24hr reception, room service, restaurant, bar, business facilities, gym facilities, sauna, laundry/dry cleaning, non-smoking rooms, private garage, meeting rooms, bellman, baby sitting.

BB	SINGLE	DOUBLE	TRIPLE
01 NOV 11 - 31 MAR 12	TBA	TBA	TBA

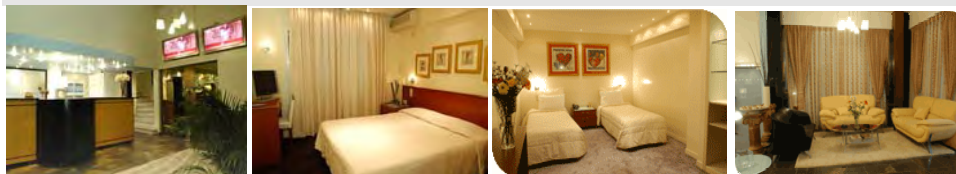
### SAVOY\*\*\*\*/PIRAEUS



**Location:** centrally located at Piraeus Port. **Rooms:** Air-condition, Bath or shower, Direct-dial phone, Fridge, Hairdryer, Mini-bar, Modem Port, Pay-TV, Radio/Stereo System, Room service, Satellite-TV, Sound proof. **Facilities:** Dry Cleaners, Parking, Safety boxes, Breakfast room, Buffet, E-mail, Fax, Central heating, Fully air conditioned, Restaurant, Bar, Coffee bar, Business services.

BB	SINGLE	DOUBLE	TRIPLE
01 NOV 11 - 31 DEC 11	66.00	39.00	30.70
01 JAN 11 - 31 MAR 11	68.00	39,50	30.70

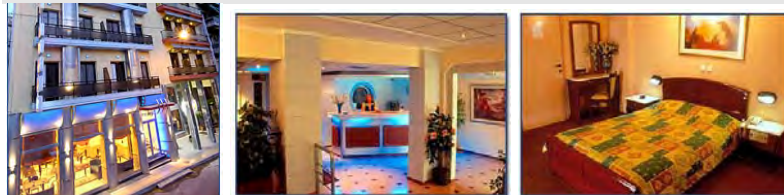
### PIRAEUS DREAM\*\*\*/PIRAEUS



**Location:** centrally located at Piraeus Port. **Rooms:** a/c, Safe box, Hairdryer, Cleaning and ironing service, Secretarial support (on request), satellite TV. **Facilities:** reception, Internet Access (Internet Point), Meeting Room, Doctor on call, Fax, fax-photocopy service, Laptops on call, Playstation 2.

BB	SINGLE	DOUBLE	TRIPLE
01 NOV 11 - 31 MAR 12	41.00	25.50	23.00

### ANITA & ARGO HOTELS\*\*/PIRAEUS

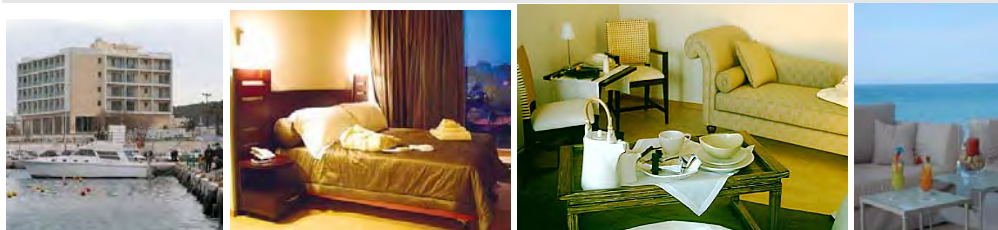


**Location:** centrally located at Piraeus Port. **Rooms:** a/c, cable TV, satellite TV, Radio, Direct Dial phone, private facilities, room service. **Facilities:** reception, a/c, lounge, bar/dinning room, TV room, pets permitted.

BB	SINGLE	DOUBLE	TRIPLE
01 NOV 11 - 31 DEC 11	TBA	TBA	TBA
01 JAN 12 - 31 MAR 12	TBA	TBA	TBA

AT RAFINA PORT...

AVRA \*\*\*\*



**Location:** at the Marina Port of Rafina, on the beach. Rafina port serves as a connection to many Cycladic islands. The hotel is also the 3<sup>rd</sup> closest hotel to Athens Airport (after the Sofitel and the Holiday Inn) at about 20 min drive. The bus stop for the Airport or Athens down town is 50m from the hotel. **Rooms:** air condition, internet connection, satellite TV, music, mini-bar, safe, direct dial phone, hairdryer. **Facilities:** reception, room service, smoking and non-smoking rooms, café-restaurant, concierge, valet services, parking, laundry service, luggage storage, conference facilities,, large veranda, yachting style restaurant overlooking the ocean and the marina, garden, bar & lounge.

Sea View Rooms

BB	SINGLE	DOUBLE	SUPERIOR TRIPLE
01 NOV 11 - 31 MAR 12	57.00	34.00	39.00

TRANSFERS

From the airport to the hotels or vice versa from 01 NOV 11 till 31 MAR 12

1 pax	2 pax	3 pax	4 pax	5-50 pax
65.00	37.80	29.50	26.00	Upon request
Supplement for night transfer (22:00-07:00) 22.30 per way per taxi (1-4 pax)				

From the port to the hotels or vice versa from 01 NOV 11 till 31 MAR 12

1 pax	2 pax	3 pax	4 pax	5-50 pax
41.00	26.30	20.50	17.90	Upon request
Supplement for night transfer (22:00-07:00) 19.30 per way per taxi (1-4 pax)				

From the port to the airport or vice versa from 01 NOV 11 till 31 MAR 12

1 pax	2 pax	3 pax	4 pax	5-50 pax
68.00	39.30	30.60	30.60	Upon request
Supplement for night transfer (22:00-07:00) 21.30 per way per taxi (1-4 pax)				