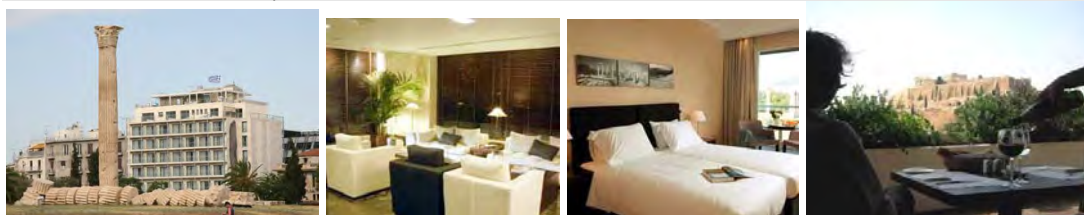


**ATHENS GATE \*\*\*\*superior**

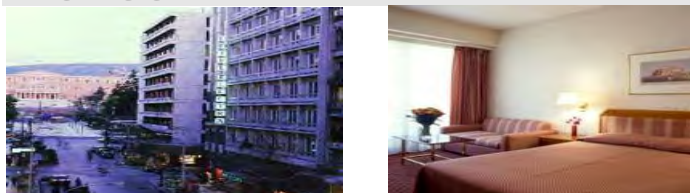


**Location:** in the historic district of Athens, exactly opposite the Temple of Olympian Zeus and Hadrian's Arch, 500 meters from the Acropolis and 100 meters from the New Acropolis Museum. **Rooms:** air condition, LCD TV, mini-bar, safe, hair dryer, direct dial phone, internet access, Parthenon view. **Facilities:** 24hrs reception, smoking & non-smoking floors, conference and meeting room, wi-fi internet access, lobby lounge, a la carte roof restaurant with amazing views to the Acropolis and Temple of Zeus, roof garden bar, TV lounge, baby sitting, concierge, laundry service, room service, parking.

**Standard rooms**

	BB	SINGLE	DOUBLE	SUP. TRIPLE (child)
01 NOV 11 - 10 NOV 11 16 NOV 11 - 31 DEC 11 01 JAN 12 - 31 MAR 12		97,00	54,00	49,00
11 NOV 11- 15 NOV 11 "MARATHON 2011"		167,00	94,00	82,40

**ATHENS ELECTRA\*\*\*\***



**Location:** on Constitution square. **Rooms:** air condition, sound proof windows, ISDN lines, voice mail, data port, TV, pay movie system, voice mail, mini bar, hair dryer, in room electronic safe boxes. **Facilities:** restaurant, bar, conference facilities

	BB	SINGLE	DOUBLE	TRIPLE
01 NOV 11 - 31 MAR 11		87,00	51,50	41,00

**ATHENS ATRIUM \*\*\*\***



**Location:** in the center of Athens, close to Syngrou Avenue, the Metro station (Syngrou - Fix Station), 1 stop away from the Acropolis and the Plaka area, in a friendly and quiet neighbourhood. **Rooms:** air condition, Jacuzzi or shower with hydromassage, safe, balcony or verande, internet access, hair dryer, digital phone system, satellite TV, mini-bar, portable pc or fax upon request. **Facilities:** reception, safe, luggage storage, snack bar, business centre, room service, restaurant, conference & meeting rooms, TV room, parking.

**Superior rooms**

	BB	SINGLE	DOUBLE	TRIPLE
01 NOV 11 - 31 MAR 12		75,00	42,00	34,70

**ESPERIA PALACE\*\*\*\***



*Hotel Room*



*Hotel Reception*



*Meeting Facilities*

**Location:** central location, only few minutes walk to Constitution and Omonia square. **Rooms:** air condition, direct dial phone, TV, hairdryer, soundproof double glazed windows. **Facilities:** restaurant, bar, room service, convention facilities.

All markets except Greece			
BB	SINGLE	DOUBLE	TRIPLE
01 NOV 11 - 31 MAR 12	TBA	TBA	TBA
HB supplement	18,00 / per person		

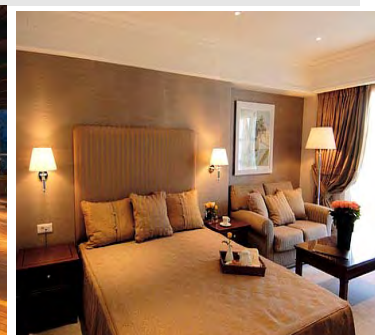
**HERODION\*\*\*\*superior**



**Location:** in the heart of Athens, few minute-walk to the Acropolis and Plaka, opposite the Herod Atticus ancient theater. **Rooms:** air condition, direct dial phone, TV with in-house movies, mini-bar. **Facilities:** tavern-style dining room, coffee shop-snack bar, conference hall, whitewashed patio shaded by pistachio trees, rooftop solarium with deck chairs and panoramic view of the Acropolis.

BB	SINGLE	DOUBLE	TRIPLE
01 NOV 11 - 31 MAR 12	67.00	40.00	35.00
Meal supplement	19,00 / per person		

**HERA\*\*\*\*superior**



**Location:** in the heart of Athens, few minute-walk to the Acropolis and Plaka, **Rooms:** air condition, direct dial phone, pay per view TV/Music, mini-bar, fridge, fax computer, coffee maker, safety box. **Facilities:** 24hrs reception, business facilities, room service, porter, dry cleaning, concierge, money exchange, restaurant, bar.

BB	SINGLE	DOUBLE	TRIPLE
01 NOV 11 - 31 MAR 12	80.00	46.50	40.70

**PARTHENON\*\*\*\***



**Location:** central, few minutes walk to Plaka, Acropolis and Constitution Square. **Rooms:** air condition, direct dial phone, TV. **Facilities:** bar, restaurant and parking.

	BB	SINGLE	DOUBLE	TRIPLE
01 NOV 11 - 31 MAR 12		64.00	37.00	31.40

**POLIS GRAND\*\*\*\***



**Location:** few minutes walk to Omonia Square and the National Archeological Museum. **Rooms:** air condition, direct dial phone, TV, music, double glazed windows. **Facilities:** restaurant, bar.

	BB	SINGLE	DOUBLE	TRIPLE
01 NOV 11 - 31 MAR 12		57,00	32,00	29,00
Meal supplement	13,00 / per person			

**PRESIDENT\*\*\*\***



**Location:** 10-minute drive to the center. **Rooms:** air condition, direct dial phone, TV. **Facilities:** 2 bars, 2 restaurant, swimming pool, gift shop, tavern, conference facilities and garage.

	BB	SINGLE	DOUBLE	TRIPLE
01 NOV 11 - 31 MAR 12		67.00	36.50	33.00
HB supplement	18,00 / per person			

**STANLEY\*\*\*\***



**Location:** down town, few minutes walk to Omonia and Railway Station, next to new Metro station **Rooms:** air condition, direct dial phone, TV, modem jack, hairdryer, safe, soundproof windows **Facilities:** bar/cafeteria, restaurant, roof garden with swimming pool, roof top bar, restaurant with live music and parking

	BB	SINGLE	DOUBLE	TRIPLE
01 NOV 11 - 31 MAR 12		59,00	33,00	30,00
HB supplement	15,00 / per person			

**TITANIA\*\*\*\* superior**



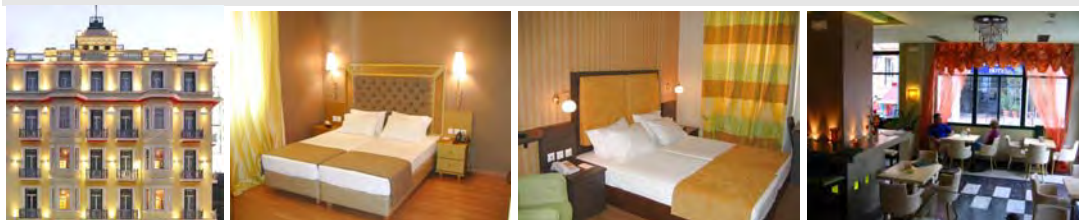
**Location:** on Constitution square. **Rooms:** completely renovated and redecorated high-tech rooms equipped with new aluminum frames with heat and soundproof double glazing windows, dual ISDN line phones with data port and multilingual voice mail, modern satellite TV system, modems for PC/fax, electromagnetic card-locks, mini bar, private safe deposit boxes, in house movies, individual climate control. **Facilities:** 2 restaurants, bar, coffee shop, 24h room service, banquet-convention halls.

**Standard rooms**

All markets			
BB	SINGLE	DOUBLE	TRIPLE
01 NOV 11 - 31 MAR 12	71.00	39,00	34.00
Meal supplement		22,00 / per person	

\*\*\*During EXHIBITION and CONGRESS PERIODS, rates are on request basis

**DELPHI ART\*\*\*\***



**Location:** central, 2-minute walk to Omonia Square, near Monastiraki and Psiri. **Rooms:** air condition, direct dial phone, satellite TV, internet access, music, safe, mini-bar, hair dryer. **Facilities:** reception, bar, bistro, room service, non-smoking rooms, restaurant.

BB	SINGLE	DOUBLE	JUNIOR SUITE
01 NOV 11 - 31 MAR 12	Upon request	Upon request	Upon request

**ACROPOLIS SELECT\*\*\*\***



**Location:** in the vicinity of the Acropolis and Plaka area. **Rooms:** air condition, direct dial phone (ISDN), TV, pay TV, safe, mini bar, hairdryer. **Facilities:** restaurant, cocktail bar, roof garden with bar overlooking the Acropolis, gym, conference facilities up 25-60 persons, private parking.

BB	SINGLE	DOUBLE	TRIPLE
01 NOV 11 - 31 MAR 12	60.50	34.50	27.00

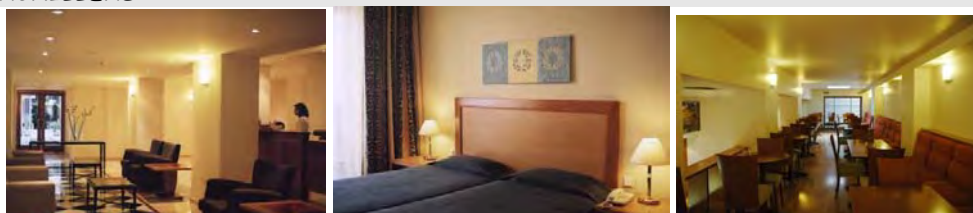
**ARION\*\*\***



**Location:** in Psyri and the vicinity of the Acropolis and Plaka area. **Rooms:** a/c, mini-fridge, TV, safe deposit box, hairdryer. **Facilities:** reception, lounge, a/c, breakfast room, rooftop terrace.

BB	SINGLE	DOUBLE	TRIPLE
01 NOV 11 - 31 MAR 12	TBA	TBA	TBA

**ACHILLEAS\*\*\***



**Location:** centrally located, of Constitution Square. **Rooms:** a/c, mini-fridge, TV, safe deposit box, hairdryer, very spacious. **Facilities:** reception, lounge, a/c, breakfast room.

BB	SINGLE	DOUBLE	TRIPLE	QUAD
01 NOV 11 - 31 MAR 12	TBA	TBA	TBA	TBA

**BEST WESTERN PYTHAGORION\*\*\***



**Location:** central, 2-minute walk to Omonia Square. **Rooms:** air condition, direct dial phone, TV, mini bar, double glazed windows. **Facilities:** bar, restaurant.

BB	SINGLE	DOUBLE	TRIPLE
01 NOV 11 - 31 MAR 12	44,00	27.00	23.00

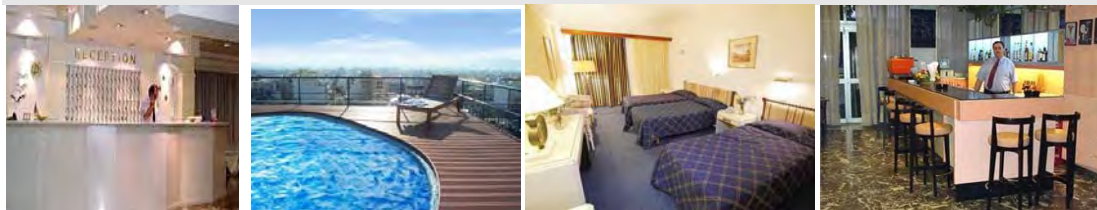
**BEST WESTERN ZINON\*\*\* CLOSED FOR RENOVATIONS**



**Location:** 2-minute walk to Omonia Square. **Rooms:** air condition, direct dial phone, TV, double glazed windows. **Facilities:** breakfast room, bar/TV lounge.

BB	SINGLE	DOUBLE	TRIPLE
01 NOV 11 - 31 MAR 12	-	-	-

**CANDIA\*\*\***



**Location:** close to the Railway Station, 10 minutes walk to Omonia Square. **Rooms:** air condition, telephone, TV, radio. **Facilities:** bar/TV lounge, restaurant.

	BB	SINGLE	DOUBLE	TRIPLE
01 NOV 11 - 15 MAR 12		34.00	17.00	15.00
16 MAR 12 - 31 MAR 12		39.00	20.00	18,40
Meal supplement		9.00 / per person		

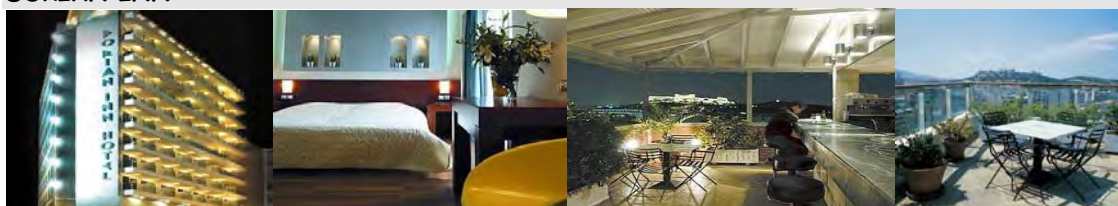
**CITY PLAZA\*\*\***



**Location:** few minutes walk to Omonia Square. **Rooms:** private bath or shower, phone, 3-channel audio system, TV. **Facilities:** bar, restaurant, roof garden, lounge bar, TV room.

Individuals & Groups. Valid for international Market				
	BB	SINGLE	DOUBLE	TRIPLE
01 NOV 11 - 15 MAR 12		TBA	TBA	TBA
16 MAR 12 - 31 MAR 12		TBA	TBA	TBA
HB supplement		TBA / per person		
FB supplement		TBA / per person		

**DORIAN INN\*\*\***



**Location:** on Omonia square. **Rooms:** air condition, direct dial phone, pay TV, hairdryer, safe. **Facilities:** 2 bars, restaurant, room service, swimming pool, convention facilities.

	BB	SINGLE	DOUBLE	TRIPLE
01 NOV 11 - 31 MAR 12		44.00	23.00	21.00
Meal supplement		11.00 / per person		

### ATHENS CYPRIA\*\*\*



**Location:** located in the city centre, off Constitution Square. **Rooms:** a/c, mini bar, satellite TV, digital safe-box, telephone, radio and hairdryer. **Facilities:** Reception, Babysitting, Foreign currency exchange (limited), Housekeeping service (daily), Dry cleaning pickup/Laundry, Room service 9:00am - 1:00am, Shoeshine stand, High speed internet access, Secretarial services, Facsimile

	BB	SINGLE	DOUBLE	TRIPLE
01 NOV 11 - 31 MAR 12		65.00	40.00	36.70

Between 31 JAN 11 - 31 MAR 11 on Fridays & Saturdays supplement of:

- 11.00 per person per day applies in a single room
- 5.50 per person per day applies in double or triple room

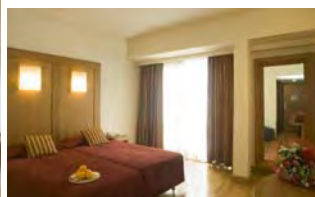
### IONIS\*\*\*



**Location:** down town, walking distance to Omonia Square. **Rooms:** air condition, direct dial phone, TV. **Facilities:** reception, bar, TV lounge, restaurant.

	BB	SINGLE	DOUBLE	TRIPLE
01 NOV 11 - 31 MAR 12		35.00	19.00	17.00
Meal supplement			12,00 / per person	

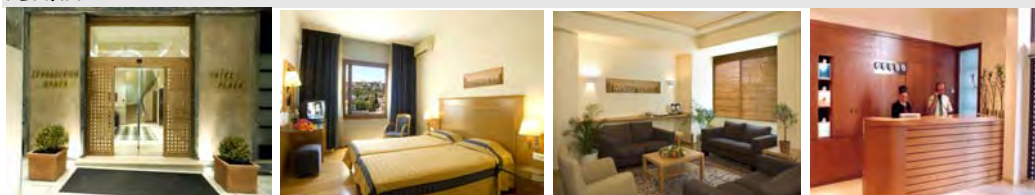
### HERMES\*\*\*superior



**Location:** in the Plaka area, underneath the Acropolis and close to Constitution Square. **Rooms:** Air Condition (Self Controlled), Satellite TV, Mini fridge, Safe deposit box, Hairdryer, Bath amenities, Telephone, Rooms with wooden floors, Smoke detectors, 45 minutes fire resistant doors, Secure bedroom key technology, Room service. **Facilities:** reception, restaurant, internet access, bar, play room.

	BB	SINGLE	DOUBLE	TRIPLE
01 NOV 11 - 31 MAR 12		64.00	37.50	28.00

**PLAKA\*\*\***

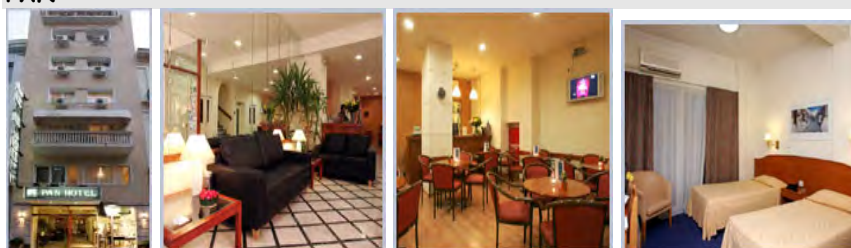


**Location:**

in the Plaka area, underneath the Acropolis and close to Constitution Square. **Rooms:** Individually controlled air conditioning, Satellite TV, Wi-Fi Internet connection, TV, Radio, Mini fridge, Hairdryer, Digital safe, Telephone, Smoke detectors, 45 minutes fire resistant doors, Room service from 07.00 - 19.00 hrs. **Facilities:** reception, roof garden, internet corner,

	BB	SINGLE	DOUBLE	TRIPLE
01 NOV 11 - 31 MAR 12		64.00	37.50	28.00

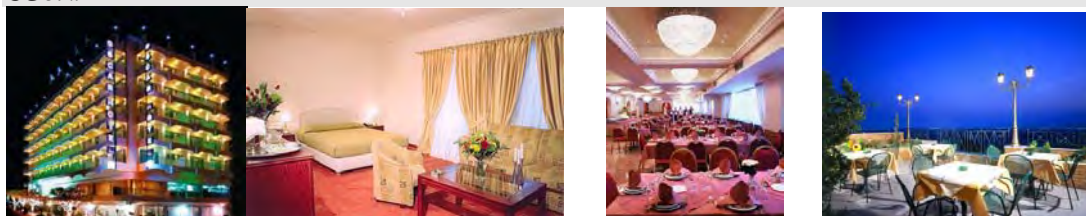
**PAN\*\*\***



**Location:** in the Plaka, close to Constitution Square. **Rooms:** Private Bath, Hair dryer, Individual Climate Control, Sound - Proof windows, Direct - Dial phone, Modem Connection, Satellite TV / Pay TV. **Facilities:** Reception, Cafeteria, Safety Boxes, Free Luggage Storage, Room Service 24 hours.

	BB	SINGLE	DOUBLE	TRIPLE
01 NOV 11 - 31 MAR 12		60.00	36.00	30.00

**OSCAR\*\*\***



**Location:** few minutes walk from Omonia Square. **Rooms:** air condition, & heating, satellite TV, digital direct phone, radio **Facilities:** bar, restaurant, roof garden with swimming pool & open air bar, room service.

	BB	SINGLE	DOUBLE	TRIPLE
01 NOV 11 - 31 MAR 12		41.00	25.00	23.00
Meal supplement			12,00 / per person	

**PHILIPPOS\*\*\*superior**



**Location:** in the vicinity of the Acropolis and Plaka area. **Rooms:** with card operated doors, double insulated exterior windows, , air condition, color TV, direct dial phone with voice mail messaging system, en-suite electronic safe, mini bar. **Facilities :** restaurant, Atrium, coffee shop, ambient low voltage lighting, hard ironed laundry delivered in wooden baskets with same evening turned down service, conference facilities

	BB	SINGLE	DOUBLE	TRIPLE	QUAD
01 NOV 11 - 31 MAR 12		55.00	31.50	27.00	24.00
Meal supplement			19,00 / per person		

**ECONOMY\*\***



**Location:** few minutes walk from Omonia Square and the National Museum. **Rooms:** a/c, direct dial phone, TV, mini-fridge, safe box, hairdryer, small balcony, soundproof windows. **Facilities:** 24 hrs reception desk, bar, TV room, Internet corner, Lobby.

	BB	SINGLE	DOUBLE	TRIPLE
01 NOV 11 - 31 MAR 12		40.00	25.00	21.00

**AMARYLLIS\*\* (CLOSED FOR RENOVATIONS)**



**Location:** down town, few minutes walk to Omonia Square. **Rooms:** air condition, TV, hairdryer, safe, music and mini fridge. **Facilities:** reception, breakfast room, roof garden bar and lounge.

	BB	SINGLE	DOUBLE	TRIPLE
01 NOV 11 - 28 FEB 12		-	-	-
01 MAR 12 - 31 MAR 12		-	-	-

**EVRIPIDES\*\***



**Location:** few minutes walk to Omonia Square. **Rooms:** direct dial phone, music. **Facilities:** reception, breakfast room and lounge.

	BB	SINGLE	DOUBLE	TRIPLE
01 NOV 11 - 15 MAR 12		35.00	23.00	20.00
16 MAR 12 - 31 MAR 12		45.00	28.00	24.00

**HOTEL ALMA\*\***

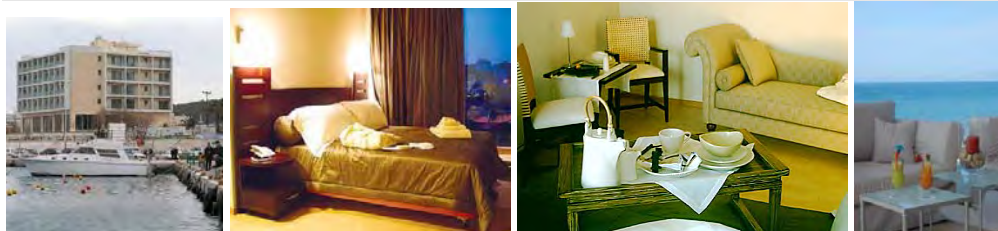


**Location:** located in Omonia Square, city centre. **Rooms:** a/c, music, TV. **Facilities:** Bar, Cafeteria, Breakfast room, Lobby, Internet facilities.

	BB	SINGLE	DOUBLE	TRIPLE
01 NOV 11 - 31 DEC 11		TBA	TBA	TBA
01 JAN 12 - 31 MAR 12		TBA	TBA	TBA

AT RAFINA PORT...

AVRA \*\*\*\*



**Location:** at the Marina Port of Rafina, on the beach. Rafina port serves as a connection to many Cycladic islands. The hotel is also the 3<sup>rd</sup> closest hotel to Athens Airport (after the Sofitel and the Holiday Inn) at about 20 min drive. The bus stop for the Airport or Athens down town is 50m from the hotel. **Rooms:** air condition, internet connection, satellite TV, music, mini-bar, safe, direct dial phone, hairdryer. **Facilities:** reception, room service, smoking and non-smoking rooms, café-restaurant, concierge, valet services, parking, laundry service, luggage storage, conference facilities,, large veranda, yachting style restaurant overlooking the ocean and the marina, garden, bar & lounge.

Sea View Rooms

	BB	SINGLE	DOUBLE	SUPERIOR TRIPLE
01 NOV 11 - 31 MAR 12		57.00	34.00	39.00

TRANSFERS

From the airport to the hotels or vice versa from 01 NOV 11 till 31 MAR 12

1 pax	2 pax	3 pax	4 pax	5-50 pax
65.00	37.80	29.50	26.00	Upon request
Supplement for night transfer (22:00-07:00) 22.30 per way per taxi (1-4 pax)				

From the port to the hotels or vice versa from 01 NOV 11 till 31 MAR 12

1 pax	2 pax	3 pax	4 pax	5-50 pax
41.00	26.30	20.50	17.90	Upon request
Supplement for night transfer (22:00-07:00) 19.30 per way per taxi (1-4 pax)				

From the port to the airport or vice versa from 01 NOV 11 till 31 MAR 12

1 pax	2 pax	3 pax	4 pax	5-50 pax
68.00	39.30	30.60	30.60	Upon request
Supplement for night transfer (22:00-07:00) 21.30 per way per taxi (1-4 pax)				